

LUPUS[®]

The background of the slide features a close-up of two hands shaking in a firm grip, signifying a business agreement or partnership. The hands are wearing dark business suits with white cuffs. The entire image is overlaid with a semi-transparent blue filter. On the left side, there is a white graphic of a circuit board with various lines and nodes. In the top right corner, the word 'LUPUS' is written in a stylized, purple, sans-serif font with a registered trademark symbol. Centered over the handshake is the main title in a large, bold, black, serif font.

LUPUS ELECTRICAL & CONSTRUCTION COMPANY PRESENTATION

CONTENTS

	ABOUT US
	HSE POLICY
	COMPANY ORGANIZATION CHART
	PROJECTS INVOLVED IN MANAGEMENT
	KEY PERSONNEL
	PERSONNEL CAPABILITY
	SERVICES
	TARGET COUNTRIES
	WORK COMPLETION CERTIFICATES
	CERTIFICATES
	CONTACT

ABOUT US

LUPUS Electrical & Construction Company was founded in 2016 in Bursa, Turkey as a privately-owned company.

As we have been experienced in industrial construction for many years, our aim and vision is to serve our best effort, experience, high quality workmanship and safety in our works. As a trusted solution partner of our clients, we are targeting a new breath to construction world especially in Turkey, Azerbaijan, Turkmenistan, Georgia and Russia where we are very familiar with the local regulations and have sufficient amount of worker portfolio including engineers, supervisors, technicians and workers.

While achieving our aims, our first priority shall be always safety of our workers, environmental and social responsibilities.

We are proud to declare that we had completed the projects which we had been involved in project management with 2,000,000 Man-hour totally and without any Loss Time Accidents.

ABOUT US

As a new founded company, one of the first targets of us is to open new branch offices in Azerbaijan and Georgia.

LUPUS Electrical & Construction Company would serve in electrical and instrumentation works including cabling, cable tray installation, termination, instrumental and electrical device installation, calibration of instrument devices, earthing and pre-commissioning mainly.

Additional to our workmanship scope, procurement and delivery of related equipment, consumables and materials could be handled by us under the circumstances of good and long lasting relations with the suppliers.

OUR WORD IS OUR WORK!

HSE POLICY

It is the policy of LUPUS Electrical & Construction Company that all our activities shall be conducted in a manner which safeguards the Health, Safety and Welfare of all persons and preserves the natural Environment.

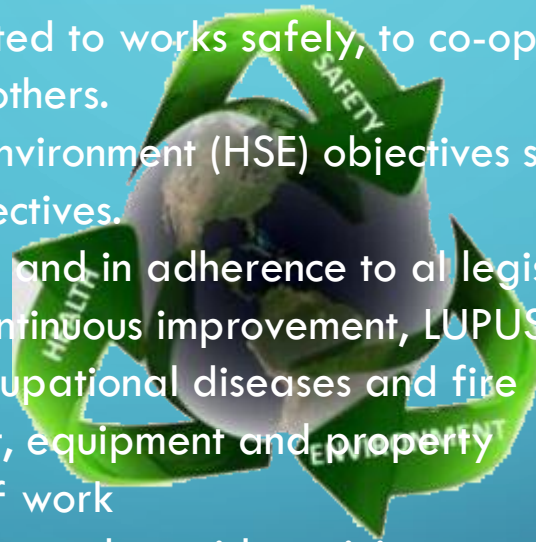
Every employee is obligated to work safely, to co-operate and act responsibly in preventing injuries to himself and to others.

Our Health, Safety and Environment (HSE) objectives shall bear equal importance our fundamental business objectives.

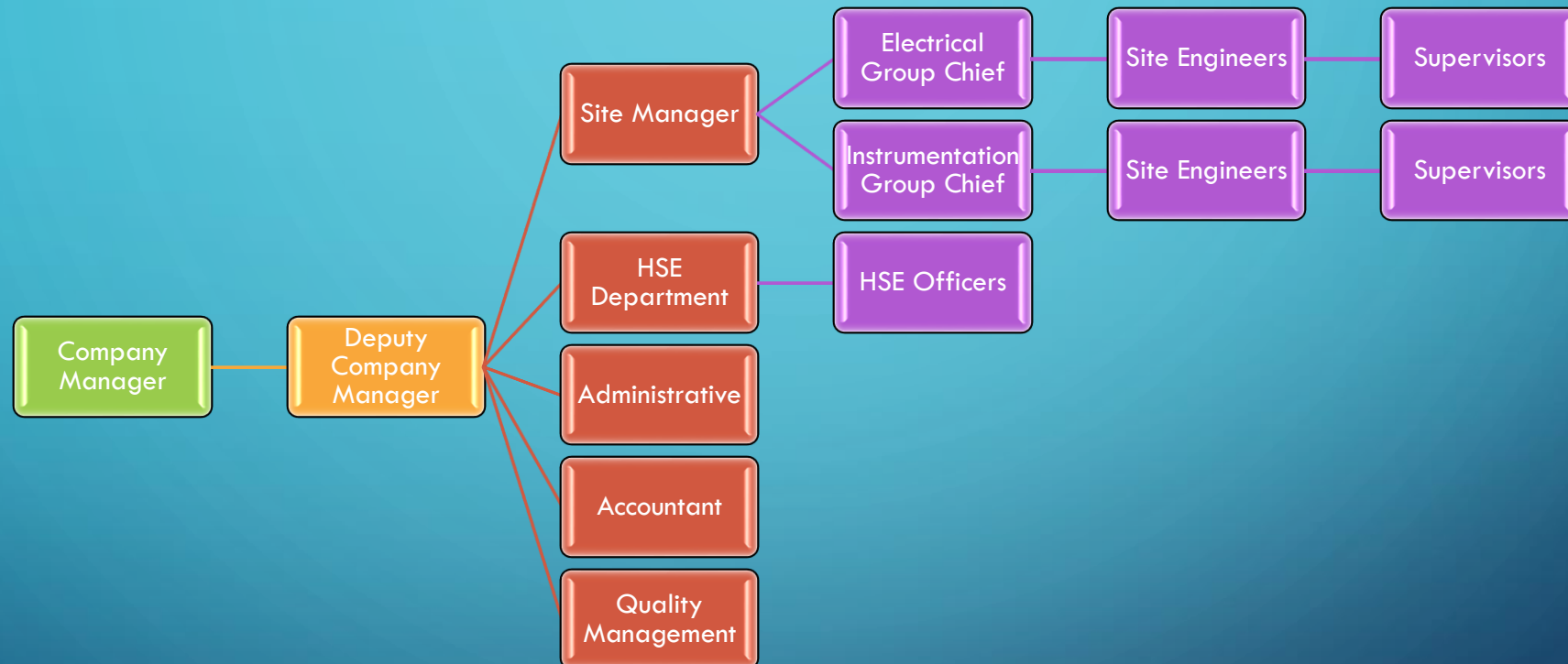
In pursuance of this policy and in adherence to all legislative and other requirements with the commitment to achieve continuous improvement, LUPUS Electrical & Cons. Co. will endeavor to:

- Prevent all accidents, occupational diseases and fire
- Prevent damage to plant, equipment and property
- Implement safe system of work
- Promote safety awareness and provide training to employees to achieve our HSE objectives
- Provide forum to employees, customers and contractors to actively participate in our HSE programs
- Safeguarding the interest of the general public and surrounding community

Health, Safety & Environment



COMPANY ORGANIZATION CHART



ONGOING PROJECTS

**WIND POWER PROJECT
NOVOTROITSK UKRAINE**

**140MW WIND FARM INCLUDING
SUBSTATION, OVERHEAD LINE AND
TURBINES**

- PROJECT MANAGEMENT
- PROCUREMENT
- SUPERVISION
- DESIGN



ONGOING PROJECTS

AKDAG WIND POWER PROJECT
KONYA TURKEY

**25MW WIND FARM INCLUDING
SUBSTATION, OVERHEAD LINE AND
TURBINES**

- EPC PROJECT MANAGEMENT
- PROCUREMENT
- SUPERVISION
- DESIGN
- CONSTRUCTION



PROJECTS INVOLVED IN MANAGEMENT

MCR-A TURKMENISTAN BLOCK 1 GAS
DEVELOPMENT PROJECT E&I WORKS

160.000 METERS CABLE
7.400 METER CABLE TRAY
1989 EA INSTRUMENT DEVICES
227 EA LIGHTING FIXTURES
66 EA PANELS

- CABLING WORKS
- CABLE TRAY INSTALLATION
- LIGHTING WORKS
- LIGHTNING WORKS
- EARTHING WORKS
- FIRE&GAS INSTALLATION WORKS
- HEAT TRACING WORKS
- TELECOM SYSTEM INSTALLATION
- E&I PANEL INSTALLATION WORKS
- INSTRUMENT DEVICES INSTALLATION WORKS
- PRE-COMMISSIONING WORKS



PROJECTS INVOLVED IN MANAGEMENT

**AZMECO METHANOL REFINERY
PROJECT E&I WORKS**

**233.000 METERS CABLE
10.500 METER CABLE TRAY
632 EA LIGHTING FIXTURES
90 EA PANELS**

- CABLING WORKS**
- CABLE TRAY INSTALLATION**
- LIGHTING WORKS**
- LIGHTNING WORKS**
- EARTHING WORKS**
- E&I PANEL INSTALLATION WORKS**
- INSTRUMENT DEVICES INSTALLATION WORKS**
- PROCUREMENT**



PROJECTS INVOLVED IN MANAGEMENT

**PTH METHANOL STORAGE TANKS
PROJECT E&I WORKS**

**31.000 METERS CABLE
1.700 METER CABLE TRAY
117 EA LIGHTING FIXTURES
148 EA INSTRUMENTS
20 EA PANELS**

- DESIGN
- PROCUREMENT
- CABLING WORKS
- CABLE TRAY INSTALLATION
- LIGHTING WORKS
- LIGHTNING WORKS
- EARTHING WORKS
- E&I PANEL INSTALLATION WORKS
- INSTRUMENT DEVICES INSTALLATION WORKS
- PRE-COMMISSIONING
- COMMISSIONING
- START UP



PROJECTS INVOLVED IN MANAGEMENT

AZMECO CO2 UNIT PROJECT E&I WORKS

**8.000 METERS CABLE
1.200 METER CABLE TRAY
36 EA LIGHTING FIXTURES
216 EA INSTRUMENTS
4 EA PANELS**

- CABLING WORKS**
- CABLE TRAY INSTALLATION**
- LIGHTING WORKS**
- EARTHING WORKS**
- E&I PANEL INSTALLATION WORKS**
- INSTRUMENT DEVICES INSTALLATION WORKS**
- PRE-COMMISSIONING**



PROJECTS INVOLVED IN MANAGEMENT

TRIGENERATION AND
COGENERATIONS SYSTEMS AZERSUN

7 DIESEL GENERATORS
14.500 METERS CABLE
800 METER CABLE TRAY
72 EA LIGHTING FIXTURES
12 EA PANELS

- CABLING WORKS
- CABLE TRAY INSTALLATION
- LIGHTING WORKS
- EARTHING WORKS
- E&I PANEL INSTALLATION WORKS
- PRE-COMMISSIONING



KEY PERSONNEL

Company Manager : Samet Soyyiğit

Education : Electrical Engineering (2008) – Yıldız Technical University

Professional Career :

2016 : LUPUS Electrical & Construction Company
Company Manager-Owner

2016 : ARTEKON Kalite
Head Office Manager

2015-2016 : Renaissance & GAMA JV
E&I Group Chief – Yamal LNG Project CWP3B – Russia

2010-2015 : HICC “Heavy Industry and Construction Company”
Site Manager – Trigeneration and Cogeneration Stations – Azerbaijan
Technical Office Manager – SOCAR BST Loading and Unloading Facility – Georgia
Technical Office Manager – AZMECO Cooling Tower – Azerbaijan
Technical Office Manager – AZMECO CO2 Unit – Azerbaijan
Tech. Off. Mng + E&I Group Chief – PTH Methanol Storage Tank Project – Georgia
Tech. Off. Mng + E&I Group Chief – Azmeco Methanol Plant – Azerbaijan

2008-2010 : ILK Insaat Taahhut Sanayi ve Ticaret LTD STI
E&I Group Chief – Petronas MCR-A Offshore Platform Project – Turkmenistan
Technical Office Engineer – Petronas Onshore Tankage Works - Turkmenistan

KEY PERSONNEL

Company Manager : Engin Ertik

Education : Administration and Accounting (2004) – Fırat University

Professional Career :

2016 : LUPUS Electrical & Construction Company
Company Manager-Owner

2013-2016 : ARTEKON Kalite
Company Manager-Owner

2005-2013 : ILK Insaat Taahhut Sanayi ve Ticaret LTD STI
Administration and Accounting Manager – Azerbaijan
Deputy Administration and Accounting Manager – Turkmenistan
Administration and Accounting Chief - Petronas MCR-A Offshore Platform Project – Turkmenistan
Administration and Accounting Chief – Turkey
Administrator and Accountant - Turkey

2005-2005 : GOKCE Yemek Uretim LTD. STI.
Accountant - Turkey

PERSONNEL CAPABILITY

DESCRIPTION	QTY
Project Manager	2
Site Manager	3
Engineer	4
Supervisor	9
Electrician – Turkish	45
Instrumentation - Turkish	30
Local Electrician	700
GENERAL TOTAL	793

With our experienced management team in industrial projects and our Turkish, Azerian, Turkmen, Georgian and Russian teams, we are ready to mobilize and commence construction works.

SERVICES

- **PROCUREMENT**
- **SUPPORT MANUFACTURING AND INSTALLATION**
- **CABLE TRAY INSTALLATION**
- **CABLING**
- **LIGHTING WORKS**
- **EARTHING WORKS**
- **LIGHTNING WORKS**
- **PANEL INSTALLATION**
- **TERMINATION WORKS**
- **INSTRUMENT DEVICE INSTALLATION**
- **INSTRUMENT CALIBRATION**
- **FIRE&GAS SYSTEM**
- **CCTV SYSTEM**
- **LOUD SPEAKER & MULTIMEDIA SYSTEM**
- **CABLE MARKING**
- **PRE-COMMISSIONING & COMMISSIONING**

TARGET COUNTRIES



WORK COMPLETION CERTIFICATES



WORK COMPLETION CERTIFICATES



WORK COMPLETION CERTIFICATES

CERTIFICATE OF ACHIEVEMENT

This certificate is awarded to
E&I WORKS MANAGER  **SAMET SOYYIGIT**

On significant achievement of the
Opportune, Quality & Faultless Work

AZERBAIJAN METHANOL PLANT PROJECT, AZERBAIJAN
(01.11.2010 - 30.07.2012)

Az Me Co
AZERBAIJAN METHANOL COMPANY

Date July - 2012



Nizami Piriye
Chairman



WORK COMPLETION CERTIFICATES

CERTIFICATE OF ACHIEVEMENT

This certificate is awarded to
E&I WORKS MANAGER  **SAMET SOYYIGIT**

for the dedication in safety achievement for 3 million man-hours without Lost Time Injury (LTI) on
November 2010 till July 2012 during the fabrication of

**CONSTRUCTION WORKS AT
AZERBAIJAN METHANOL PLANT PROJECT, AZERBAIJAN
(01.11.2010 - 30.07.2012)**

Az Me Co
AZERBAIJAN METHANOL COMPANY



Date July - 2012

Nizami Piriye
Chairman

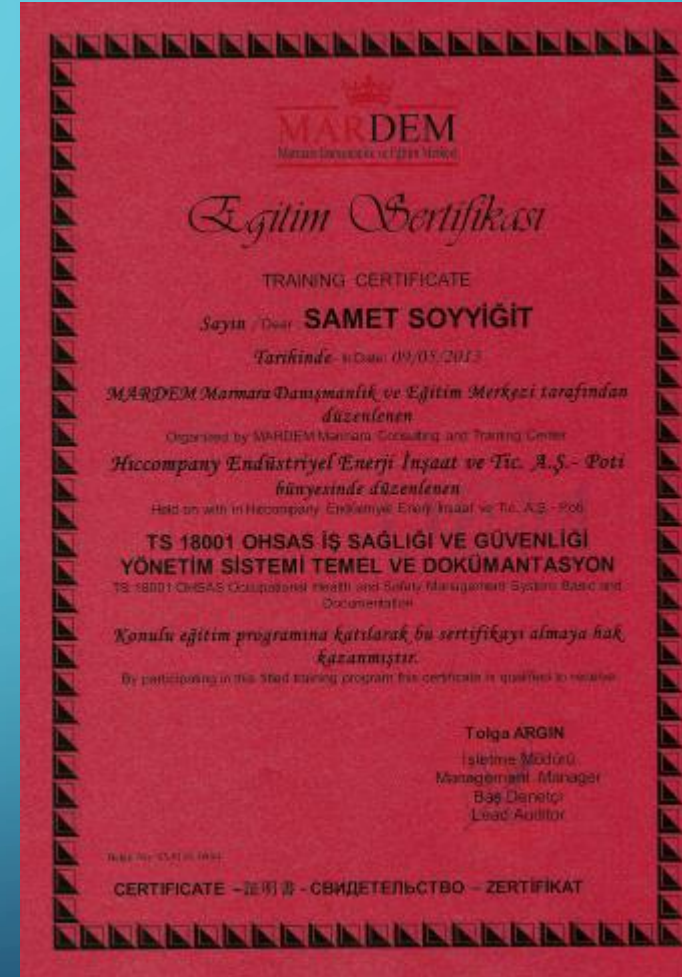


CERTIFICATES

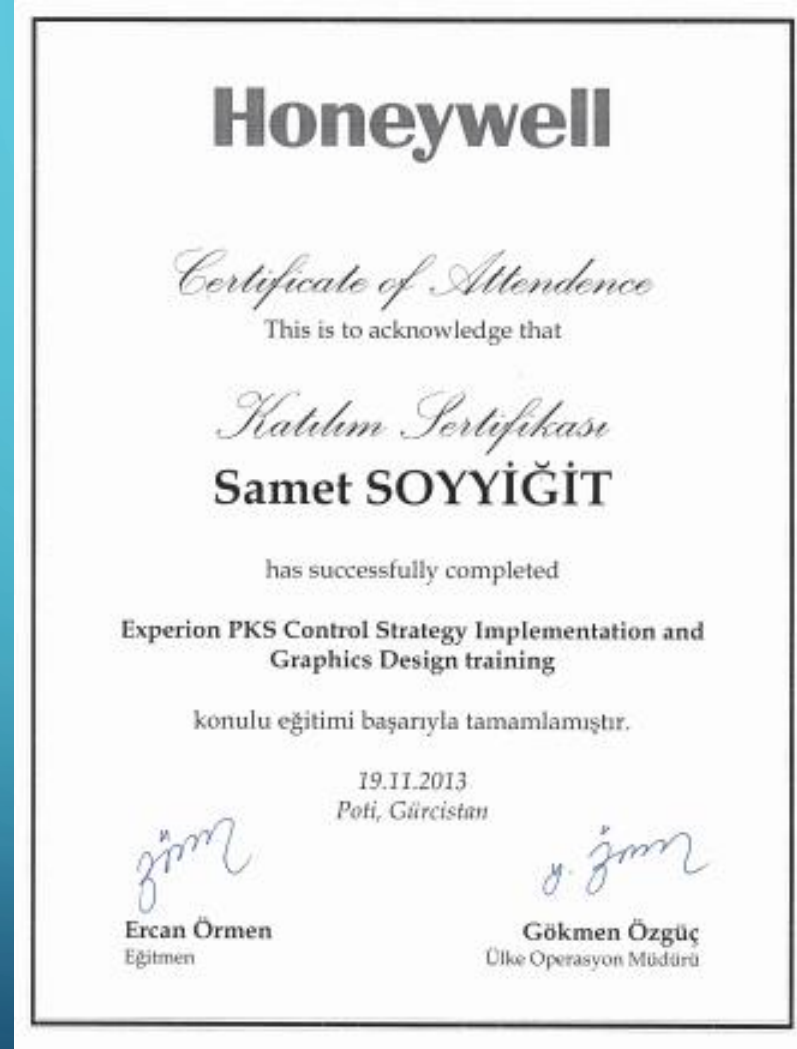
LUPUS®



CERTIFICATES



CERTIFICATES



CONTACT

THANK YOU FOR YOUR TIME & INTEREST

Contact Persons:

SAMET SOYYIGIT +90 531 962 15 94
+995 591 013 088
samet.soyyigit@lupuselektrik.com

ENGİN ERTİK +90 535 053 45 40
+995 591 101 409
engin.ertik@lupuselektrik.com